



# WESTMEATH PUBLIC PARTICIPATION NETWORK 2025

Produced by Square Peig Solutions



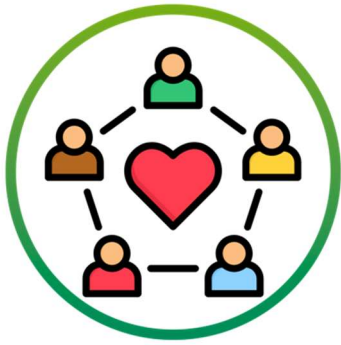
An Easy-to-Read Guide

This guide will tell you about some things in an easy-to-understand way. This will include:

- What a Public Participation Network is and what it does.
- What a Plenary is.
- What is a linkage group.

## Public Participation Networks (PPN)

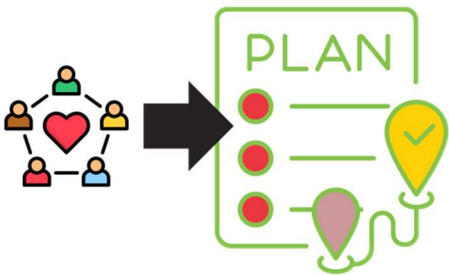
A Public Participation Network (PPN) is a group that helps people and community organisations have a say in local decisions.



### What does the PPN do?

- It works with your local council.
- It makes sure many voices are heard.
- The PPN brings local groups together.

These groups can be about community, social issues, the environment, or charities. All groups work together for a better community.



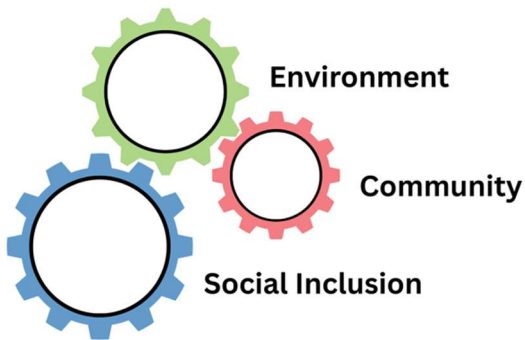
When a group joins the PPN, it becomes a member. Members can share ideas and take part in local plans. They can also vote for people to represent them.



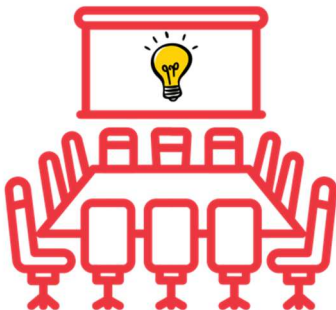
The PPN picks people called representatives. They tell the council and other public bodies what local people think and need.



The PPN helps people learn about meetings, events, and how to take part. It shares information in a clear way and helps everyone feel included.



The PPN has three main areas of work: Community, Social Inclusion, and the Environment. Groups choose which area fits their work best. This helps the PPN understand what people care about.



The PPN holds two big meetings every year called the Plenary. All member groups can come to the Plenary. It is the main meeting where decisions are made together.



At the Plenary, members talk about important issues. They share ideas, ask questions, and plan for the year. Members can also vote on PPN actions. The PPN is here to help your community have a strong voice. It makes it easier for people to take part in local decisions. You can join the PPN if you want your group to be involved.



## What Is a Linkage Group?

A linkage group is a group of people from community organisations. They meet to talk about local issues and share ideas. Linkage groups are part of the Public Participation Network (PPN). They help local people have a say in council decisions.



Each group focuses on a topic like disability, environment, housing, or health. You can join the group that matches your interests.



Linkage groups choose representatives to speak at council committee meetings. These representatives bring the group's views and report back afterwards.

Anyone in a PPN member organisation can join a linkage group.

Westmeath Linkage Groups include:

- Economic-Development Enterprise Agriculture Tourism
- Environment Climate-Action Rural-Water Emergency-Services
- Planning Regeneration Transportation
- Housing Community Recreation Culture

