

# Westmeath Local Community Safety Partnership PPN Plenary 24<sup>th</sup> November 2025

Brigid Geoghegan, Co-Ordinator Westmeath LCSP



# Community Safety: The Policy Context



# Westmeath

LOCAL COMMUNITY  
SAFETY PARTNERSHIP

Commission on the Future of Policing in Ireland (2018)	Community Safety Policy (2021)	Local Community Safety Partnership pilots (2021-2024)	Policing, Security and Community Safety Act 2024
<p>Community safety is not solely the responsibility of the An Garda Síochána and requires <b>multiagency cooperation</b> and policing being done in <b>partnership with communities</b></p>	<p>Community safety is the concept of people <b>being safe</b> and <b>feeling safe</b>.</p> <p>Improving community safety needs a <b>multi-sectoral approach</b>, strong inter-agency <b>collaboration</b> and <b>proactive dialogue</b> with the community</p>	<p>Dublin North Inner City, Longford and Waterford</p> <p>Independently evaluated</p> <p>Responsive to <b>local</b> needs</p> <p>Developed tailored <b>local community safety plans</b></p>	<p>Commenced 2 April 2025</p> <p>Statutory obligation to have regard to <b>harm prevention</b> and <b>cooperate with each other</b> to deliver safer communities</p> <p>Establishes infrastructure to support community safety</p>

# National Community Safety Infrastructure



## Local Community Safety Partnerships



- 36 Local Community Safety Partnerships established
- Operations governed by Regulations (SI 279/2025) and Guidance provided by the National Office for Community Safety
- Hosted by local authorities: collective responsibility - do not 'belong' to any one group or agency
- 6 meetings per year; a minimum of one public; and one closed for elected representatives from the area
- Focused on local context and needs.
- Statutory responsibilities which includes development and implement a three year local community safety plan for Westmeath

# Local Community Safety Partnerships Guiding Principles



**Westmeath**

LOCAL COMMUNITY  
SAFETY PARTNERSHIP

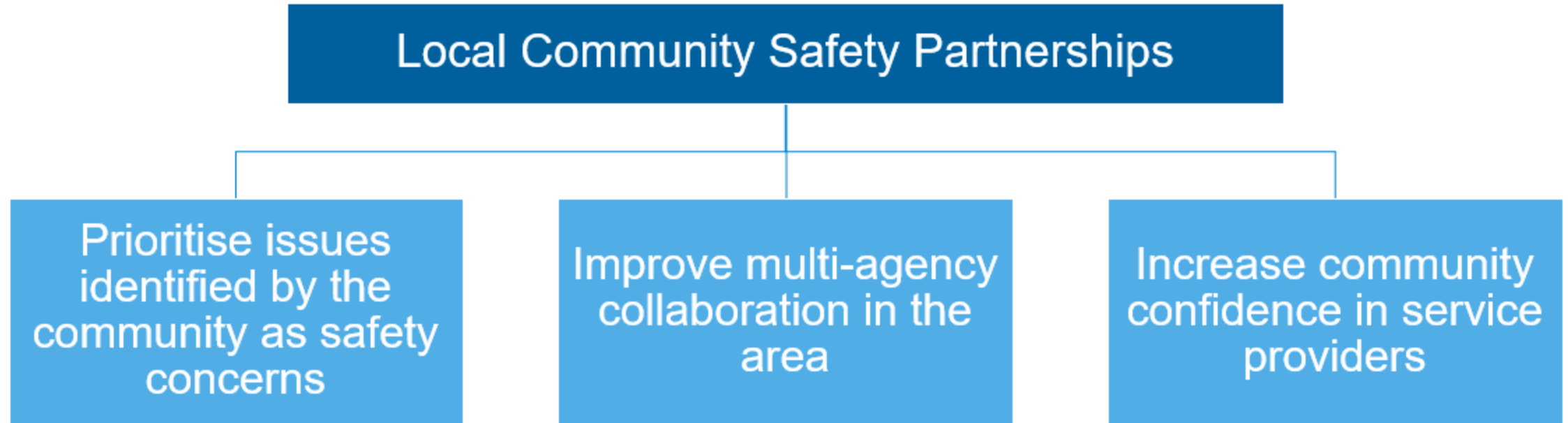
- A Whole-of-Government Approach
- Collaboration and Partnership
- Harm Prevention
- Targeted Support for Disadvantaged Communities
- A Participative Approach
- Social Inclusion
- Accountability
- Evidence Based Approach
- Respect/Recognition of Experience and Contribution of All Members



# Local Community Safety Partnerships – Objectives

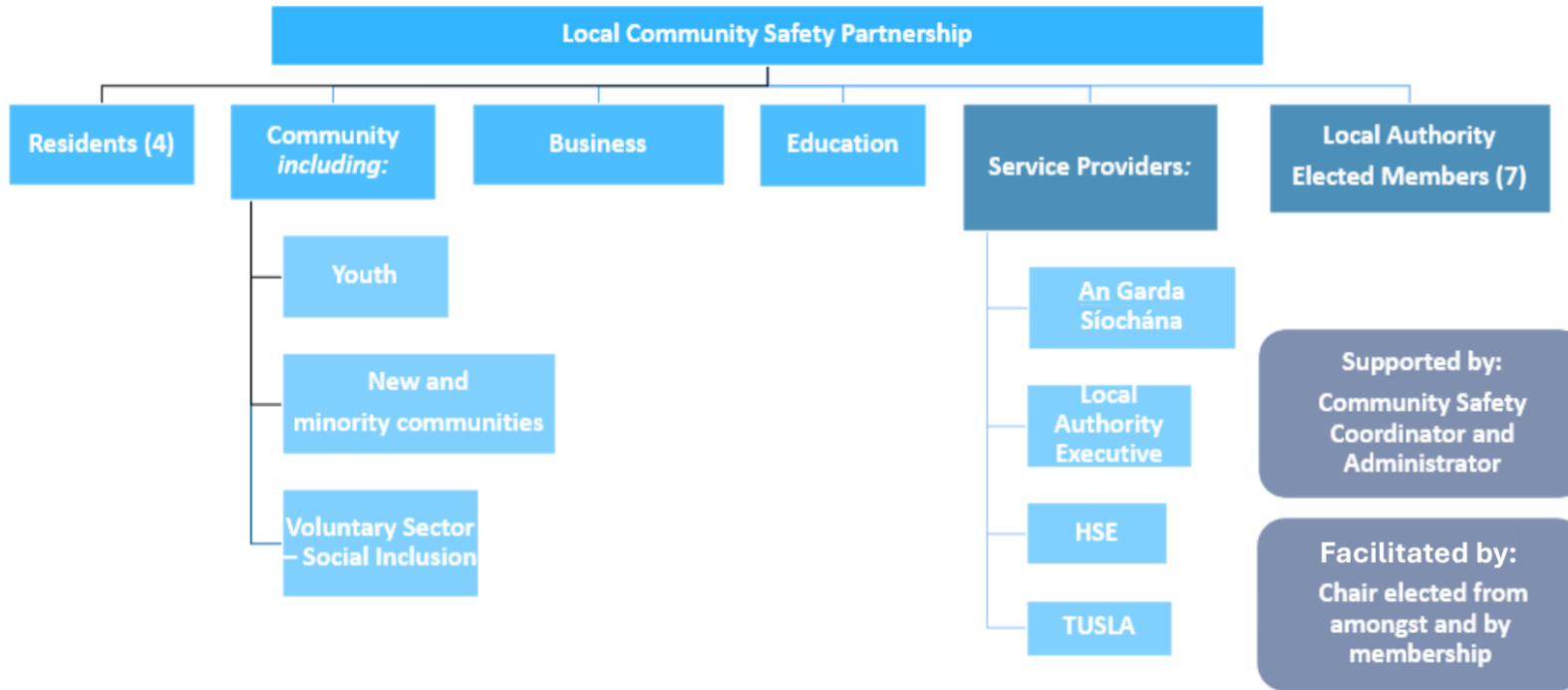


**Westmeath**  
LOCAL COMMUNITY  
SAFETY PARTNERSHIP



# Local Community Safety Partnership

## Core Composition



### Category

Elected Representative  
Elected Representative  
Elected Representative  
Elected Representative  
Elected Representative  
Elected Representative  
Elected Representative  
Director of Services

### Category

An Garda Síochána  
TUSLA - The Child & Family Agency  
HSE

### Education - LWETB

Justice System/Westmeath Probation Services

### Area/Organisation

Westmeath Community Development  
Victims of Crime/Esker House Domestic Abuse Support Service  
Irish Rural Link  
Rural Area Resident (MK MD)  
Rural Area Resident (AM MD)  
RAPID Area Athlone  
RAPID Area Mullingar  
Midland Regional Drug & Alcohol Task Force  
Youth Work Ireland Midlands  
Social Inclusion  
Social Inclusion LGBTQ+  
Business  
Youth  
Social Inclusion  
New/Minority Communities Network

# Role & Election of LCSP Chair



- Significant volunteer role, requiring dedication and time.
- Role description provided by National Office for Community Safety informed by findings from pilots
- Pilot evaluation identified impartiality; relational competence; strategic leadership; facilitation skills as being essential
- Any member of LCSP can be nominated / elected
- Process – EOI

# Number of LCSP meetings



Legislation requires LCSP meetings area **per year** to include no fewer than:

- **four quarterly** Safety Partnership meetings – in-committee
- **one public** meeting
- **one closed meeting** for elected representatives for LCSP area

The frequency, location and timing of ordinary meetings of the LCSP to be determination by Westmeath LCSP

\*\* The LCSP shall hold as many meetings as may be necessary for the performance of its functions



# LCSP Supported by two dedicated staff



- The **Community Safety Coordinator** Grade VII Administrative Officer – **Brigid Geoghegan**
  - ✓ engage in joint planning and co-ordination of services for the community.
  - ✓ the design and delivery of community safety projects in the relevant local authority area
  - ✓ key driving force for the work of the Safety Partnership
  - ✓ act as a hub for the local community in relation to community safety
  - ✓ support to community members to identify local priorities and access relevant services, as well as assisting the LCSP in drafting and delivering on a local community safety plan
- The **Community Safety Administrator** Grade IV Assistant Staff Officer – **Andrew Slevin**
  - ✓ will administer the Safety Partnership communication channels
  - ✓ providing a hub for the local community in relation to community safety
  - ✓ key role in providing operational and administrative support to the Community Safety Coordinator to establish and run an efficient and effective secretariat, supporting all the administrative and organisational requirements of the Local Community Safety Partnership (LCSP)



# Westmeath Local Community Safety Plan





**Westmeath**

LOCAL COMMUNITY  
SAFETY PARTNERSHIP

# What is Community Safety

## What it is – What it is not



The most precious gift you can give  
anyone is your time & attention  
Thank you

**Westmeath Local Community Safety Partnership**  
**Áras an Chontae, Mullingar, Co. Westmeath**  
**044 9332114 – [LCSP@westmeathcoco.ie](mailto:LCSP@westmeathcoco.ie) – [www.westmeathcoco.ie](http://www.westmeathcoco.ie)**

