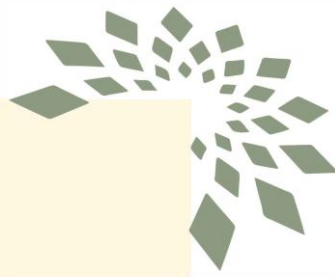


# Welcome



Ballinahown



Website: [www.ballinahownvillage.com](http://www.ballinahownvillage.com)



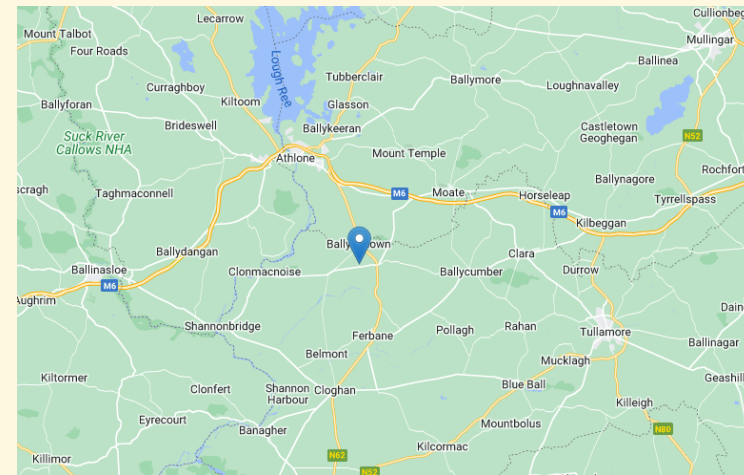
Facebook: [www.facebook.com/BallinahownCommunityDevelopment](https://www.facebook.com/BallinahownCommunityDevelopment)



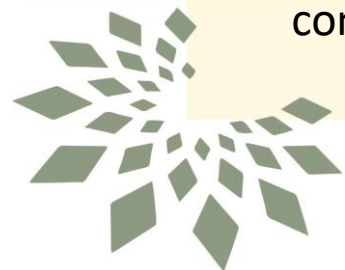
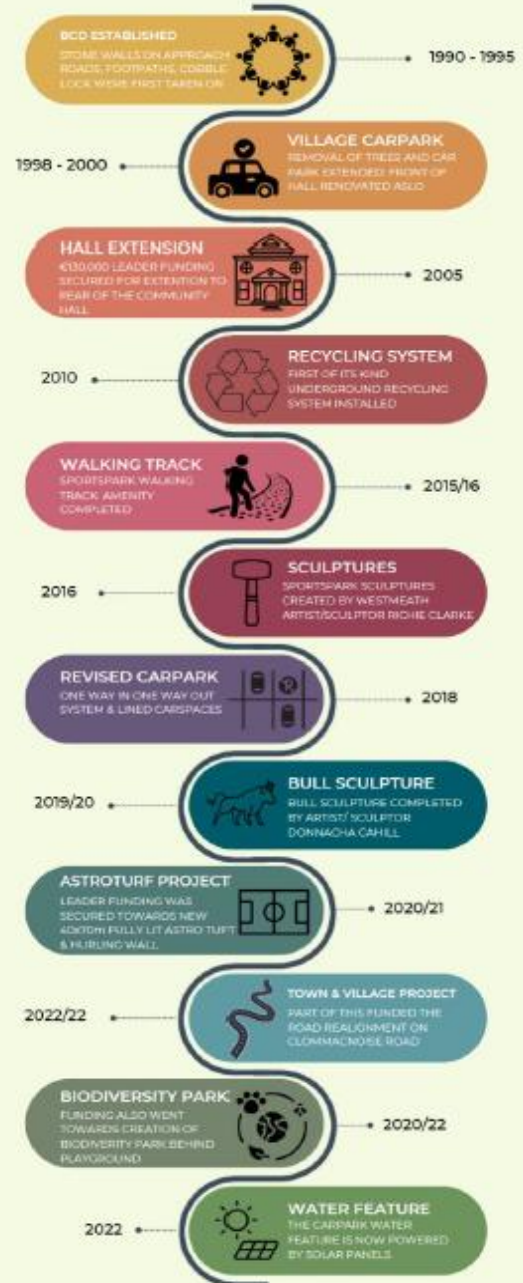
Instagram: [@ballinahown\\_village](https://www.instagram.com/ballinahown_village)

# About US

- We are a rural community located on the Westmeath/Offaly border.
- While our immediate village has a population of just 75, there are hundreds in our rural hinterland that call Ballinahown home.
- Ballinahown Community Development (BDC) was established in 1990.
- The ethos of BDC is one of sustainability and everything we have achieved in the village is taken with a sustainable approach in mind.
- Community and the improvement of our community is the core objectives of BDC.



## BALLINAHOWN COMMUNITY DEVELOPMENT TIMELINE



ballinahown

# Community Achievements

- Westmeath Tidy Towns County Winners 2004 – 2025
- In 2019, we participated in Pride of Place competition where we placed second in our category.
- In 2023, we secured our first Tidy Towns Gold Medal.
- In 2024, we participated in Entente Florale and won;
  - Gold medal
  - Special Characteristic Prize for the energy, enthusiasm and involvement of the local community
- Also in 2024, we won Tidy Towns Tidiest Village category.
- In 2025, we were runners up in Tidy Towns Tidiest Village category.



2021	Bronze Medal	
2022	Silver Medal	
2023	First Gold Medal	
2024	Ireland's Tidiest Village	

# SUCCESSES



## Long term-vision Planning

- A Vision for Ballinahown Village 2020 – 2030
- Ballinahown Water Management Plan 2023
- Ballinahown Biodiversity Plan 2022 – 2026
- Ballinahown 3 Year Plan, 2024 – 2026 (Tidy Towns Application)



## Securing funding and partnerships, for example;

- Westmeath County Council
- LAWPRO
- LEADER
- Community Employment Scheme
- Other community groups



## Recognition and awards - Proven track record



## Strong community engagement

- Pride of Place
- Entente Florale



## Innovation with limited resources

- Reuse material and resources
- Stretch the budget
- Think outside the box



ballinahown

# CHALLENGES



Reliance on  
Volunteers /  
Lack of  
Volunteers



Funding  
uncertainty and  
competition

- Match funding
- Start small to prove capability



Maintaining  
momentum over  
time

- Keeping volunteers motivated
- Risk of fatigue after big projects



Coordination  
complexity

- Many stakeholders to keep happy
- Balancing community needs and expectations
- Boarder Village



Pressure of high  
standards /  
What's Next?

- Expectations to maintain or exceed
- Continuous upkeep required



Reliance of  
Community  
Employment  
Scheme

- Difficult to recruit



# SUPPORTS

- Financial Supports, e.g.:
  - WCC
  - Tree Council
  - Community Investment Fund
- Community Supports e.g.:
  - Local Schools
  - Ballinahown Active Age
  - An Garda Siochana
- Technical & Specialist Expertise
  - Ecologist
  - Architect
  - Waste Water Specialist

## Networking

- Tidy Town Groups

Ballinahown



# Thank you



ballinahown

